

UNISTART PROGRAMME

2024



THE UNIVERSITY OF
WAIKATO
Te Whare Wānanga o Waikato

CONTENTS

Welcome to Unistart 4

What does a Unistart paper involve?.....	5
Entry Requirements	5
Unistart Scholarship	5
Scholarship Eligibility Criteria	5
Fees-Free Eligibility	5
Crediting Unistart papers.....	5

Applying in 3 easy steps6

Get the right advice	6
Apply to enrol	6
Completion of enrolment	6

2024 Unistart papers taught via FLEXI7

Agribusiness	8
Arts and Social Science.....	8
Communication.....	9
English.....	9
Environmental Planning	10
Gender and Sexuality Studies	11
International Languages and Cultures	11
Māori and Indigenous Studies	13
Music.....	13
Pacific and Indigenous Studies	14
Philosophy.....	14
Screen and Media Studies.....	15
Security and Crime Science	16
Sociology	16

2024 Unistart papers taught online.....	17
Arts and Social Sciences.....	17
Climate Change.....	18
Computer Science.....	19
Data Analytics.....	20
Design.....	21
Digital Learning.....	21
Economics.....	21
Education.....	22
Engineering.....	22
Forensic Psychology.....	23
Geography.....	23
Health.....	24
Human Development.....	24
International Languages and Cultures.....	25
International Relations and Security Studies.....	25
Law.....	26
Māori Education.....	26
Mathematics.....	27
Philosophy.....	28
Political Science.....	28
Sport and Human Performance.....	29
Teaching.....	29
Writing Studies.....	30

2024 Unistart papers taught on campus	31
--	-----------

Arts and Social Sciences.....	31
Biology.....	32
Chemistry.....	33
Earth Science.....	34
Environmental Sciences.....	35
Music.....	35

Paper summary	37
----------------------------	-----------

Flexi.....	37
Online.....	38
Hamilton Campus.....	39
Tauranga Campus.....	39

Enrolment and study information	40
--	-----------

Paper costs.....	40
Paper delivery.....	40
Access to resources and student ID cards.....	40
Get in touch.....	40
Assessments.....	41
Student Services.....	41
Library.....	41
Withdrawing from papers.....	41
Grades and transcript.....	41

Important dates	42
------------------------------	-----------

NAU MAI WELCOME TO UNISTART

Are you a secondary student wanting to get a head start in tertiary education? The Unistart programme may be for you! Complete university papers while you are still at school.

Not only does the programme offer a stimulating challenge, it boosts confidence and gives insight into what it takes to study at university level. There are more than 60 papers to choose from, many of which are taught online.

GET IN TOUCH

If you have any questions about Unistart or need a helping hand with the process, we're happy to help.

Visit waikato.ac.nz/study/unistart

Unistart Programme Coordinator

unistart@waikato.ac.nz

If you would like to speak to someone about how Unistart can help with your future tertiary study, please book an appointment with one of our Future Student Advisors by visiting waikato.ac.nz/study/student-advisors.





WHAT DOES A UNISTART PAPER INVOLVE?

Unistart papers are generally run over one trimester and are worth 15 points. The workload is around 10 hours per week, which can include time watching online lectures, reading online course materials, lab work, working on assignments or preparing for and sitting tests and exams.

ENTRY REQUIREMENTS

Unistart is open to all year 12 and 13 secondary school students who:

- Have met the criteria for discretionary entrance to the University;
- Are between 16 and 20 years old at the start of the Unistart paper, and;
- Have approval from their school.

Note: If you are an international student, your current visa needs to cover tertiary level study. If it does not, you will need to apply for a Variation of Conditions on your visa (VOC) and have this approved by Immigration NZ before you apply for Unistart.

UNISTART SCHOLARSHIP

The University of Waikato Unistart Scholarship covers the cost of up to two Unistart papers. Students will automatically be considered for this scholarship when accepted into the Unistart Programme – no additional application is required.

SCHOLARSHIP ELIGIBILITY CRITERIA

As well as meeting the entry requirements for Unistart, you will also need:

- NCEA Level 2 Certificate or above endorsed with merit or excellence; and
- New Zealand citizenship or permanent residency.

FEES-FREE ELIGIBILITY

See feesfree.govt.nz for more information.

CREDITING UNISTART PAPERS

Most completed Unistart papers can be credited towards an undergraduate (Bachelors) degree at the University of Waikato to give you a head start in completing your qualification. If you want to transfer your Unistart credit to another University, you will need to get in touch with them to find out about their credit process.

APPLYING IN 3 EASY STEPS

1

GET THE RIGHT ADVICE

Your school career advisor and our Unistart Coordinator can help you select the papers that are best for you. For study advice, email unistart@waikato.ac.nz

Note: Before you can apply for Unistart, your school needs to enter into a Unistart Agreement with us. We'll organise this directly with your school so be sure to inform your school of your plans before you start this process.

2

APPLY TO ENROL

Once you know what papers you want to study and you have received your school's approval to do Unistart, visit waikato.ac.nz/study/unistart to complete your school approval form and submit an online application to enrol.

3

COMPLETION OF ENROLMENT

If you meet the Unistart Scholarship eligibility criteria, as well as the programme entry requirements, you will need to select your paper/s. Then you will receive an enrolment agreement. Accepting this agreement will give you access to your paper. If you are unsuccessful in meeting the Unistart Scholarship eligibility criteria, but have met the programme entry requirements, your offer will include paper fees. If this is the case, we will get in contact with you to get confirmation that you want to proceed with the enrolment, before we finalise the application.

2024 UNISTART PAPERS TAUGHT VIA FLEXI

FLEXI Unistart papers allow students to choose between studying fully online or on-campus.

Enjoy the flexibility of studying either online or on-campus. Students opting for online learning will primarily be taught through our Moodle platform where students can watch uploaded lectures, interact with their tutors, access paper specific resources and have forum discussions with other students. If you choose to study at our Hamilton or Tauranga campuses, you will attend lectures, tutorials, labs and workshops alongside other University of Waikato students enrolled in the paper.

If you have any questions about a specific FLEXI paper, please get in touch with the listed contact person.



AGRIBUSINESS

AGRI-FOOD BUSINESS

AGBUS101-24A (HAM) - 15 POINTS

This paper focuses on the business of food in modern society. It covers the production, processing, trade, and consumption of food, while emphasising their economic, environmental, and social impacts.

Contact: Frank Scrimgeour - frank.scrimgeour@waikato.ac.nz

TEACHING DATES	LOCATION	ENTRY	APPLICATIONS CLOSE
A Trimester (26 Feb – 23 Jun)	Hamilton campus or Online	You must meet the entry requirements of Unistart	16 February 2024

ARTS AND SOCIAL SCIENCE

RIGHTS AND REASON

ARTSC103-24A (HAM) - ARTSC103-24A (TGA) - ARTSC103-24B (HAM) - 15 POINTS

Students will develop critical thinking skills by reasoning about human rights. Issues include rights-protection in difficult circumstances, who bears responsibility for protecting human rights, and armed intervention and torture in the name of human rights.

Contact: Stephanie Gibbons (A Trimester) - stephanie.gibbons@waikato.ac.nz

Jeremy Wyatt (B Trimester) - jeremy.wyatt@waikato.ac.nz

TEACHING DATES	LOCATION	ENTRY	APPLICATIONS CLOSE
ARTSC103-24A (HAM) - A Trimester (26 Feb – 23 Jun)	Hamilton campus or Online	You must meet the entry requirements of Unistart	16 February 2024
ARTSC103-24A (TGA) - A Trimester (26 Feb – 23 Jun)	Tauranga campus or Online	You must meet the entry requirements of Unistart	16 February 2024
ARTSC103-24B (HAM) - B Trimester (8 Jul – 3 Nov)	Hamilton campus or Online	You must meet the entry requirements of Unistart	28 June 2024

COMMUNICATION

COMMUNICATION COMPETENCIES

COMMS101-24A (HAM) - 15 POINTS

From traditional face-to-face conversation to digitally mediated interactions, communication is layered with social meaning that both replicates and constitutes our identities.

Contact: Julie Barbour - julie.barbour@waikato.ac.nz

TEACHING DATES	LOCATION	ENTRY	APPLICATIONS CLOSE
A Trimester (26 Feb – 23 Jun)	Hamilton campus or Online	You must meet the entry requirements of Unistart	16 February 2024

ENGLISH

TELLING THE STORY

ENGLI100-24A (HAM) - 15 POINTS

This paper examines the deep stories which are at the core of the English literary tradition and the wider Western canon, with examples from the epic of Gilgamesh to Star Wars IV: A New Hope.

Contact: Mark Houlahan - mark.houlahan@waikato.ac.nz

TEACHING DATES	LOCATION	ENTRY	APPLICATIONS CLOSE
A Trimester (26 Feb – 23 Jun)	Hamilton campus or Online	You must meet the entry requirements of Unistart	16 February 2024

ADAPTING STORIES

ENGLI101-24B (HAM) - 15 POINTS

This paper explores the art of adaptation, examining the process of transformation that occurs when creative artists reimagine and retell stories in new ways and new media.

Contact: Carolyn Hill - carolyn.hill@waikato.ac.nz

TEACHING DATES	LOCATION	ENTRY	APPLICATIONS CLOSE
B Trimester (8 Jul – 3 Nov)	Hamilton campus or Online	You must meet the entry requirements of Unistart	28 June 2024

ENVIRONMENTAL PLANNING

INTRODUCTION TO ENVIRONMENTAL PLANNING

ENVPL100-24A (HAM) - 15 POINTS

This paper focuses on the built and natural environments of New Zealand. What are the big environmental issues? How should our towns and cities grow? Which natural resources require protection and how? Students will be introduced to the theory and practice of planning in order to provide an overview of the nature and purpose of planning.

Contact: Christina Hanna - christina.hanna@waikato.ac.nz

TEACHING DATES	LOCATION	ENTRY	APPLICATIONS CLOSE
A Trimester (26 Feb – 23 Jun)	Hamilton campus or Online	You must meet the entry requirements of Unistart	16 February 2024

FUTURE CITIES

ENVPL101-24B (HAM) - 15 POINTS

Urban areas are under increased pressure from population growth, development, natural hazards and climate change. These pressures are set to continue into the future and pose considerable challenges for both planning new urban areas and retrofitting existing ones. This paper focuses on the planning challenges for urban areas in the New Zealand context.

Contact: Carolyn Hill - carolyn.hill@waikato.ac.nz

TEACHING DATES	LOCATION	ENTRY	APPLICATIONS CLOSE
B Trimester (8 Jul – 3 Nov)	Hamilton campus or Online	You must meet the entry requirements of Unistart	28 June 2024

GENDER AND SEXUALITY STUDIES

GENDER AND SEXUALITY - REPRESENTATIONS AND REALITIES

GNSEX101-24B (HAM) - GNSEX101-24B (TGA) - 15 POINTS

This paper considers issues related to gender, sexuality, and the body including health issues, media representations, gender based violence, and forms of resistance.

Contact: Katrina Roen - katrina.roen@waikato.ac.nz

TEACHING DATES	LOCATION	ENTRY	APPLICATIONS CLOSE
GNSEX101-24B (HAM) - B Trimester (8 Jul – 3 Nov)	Hamilton campus or Online	You must meet the entry requirements of Unistart	28 June 2024
GNSEX101-24B (TGA) - B Trimester (8 Jul – 3 Nov)	Tauranga campus or Online	You must meet the entry requirements of Unistart	28 June 2024

INTERNATIONAL LANGUAGES AND CULTURES

INTERNATIONAL LANGUAGES AND CULTURES

INTLC101-24B (HAM) - 15 POINTS

A cultural perspectives paper with a thematic focus on China, France, Japan, Spain and Latin America.

Contact: Maria Galikowski - maria.galikowski@waikato.ac.nz

TEACHING DATES	LOCATION	ENTRY	APPLICATIONS CLOSE
B Trimester (8 Jul – 3 Nov)	Hamilton campus or Online	You must meet the entry requirements of Unistart	28 June 2024

INTERMEDIATE SPANISH 1

SPNSH231-24A (HAM) - 15 POINTS

This intermediate language acquisition paper enables students to gain competence in grammar and conversation as well as in Spanish and Latin American cultures and conversation. This course aims to improve students' proficiency in both written and spoken Spanish and it takes students to level B1 of the Common European Framework of References for Languages.

Contact: Maria Ble-Herrero - maria.ble-herrero@waikato.ac.nz

TEACHING DATES	LOCATION	ENTRY	APPLICATIONS CLOSE
A Trimester (26 Feb – 23 Jun)	Hamilton campus or Online	You must meet the entry requirements of Unistart. In addition, students need 14 credits at Level 3 in NCEA Spanish.	16 February 2024

INTERMEDIATE SPANISH 2

SPNSH232-24B (HAM) - 15 POINTS

This paper is a continuation of SPNSH231. Students further develop skills in reading, writing, speaking and understanding Spanish. There is a focus on practical work, as well as written and spoken Spanish. This course aims to improve students' proficiency in both written and spoken Spanish and takes students to level B2 of the Common European Framework of References for Languages.

Contact: Maria Ble-Herrero - maria.ble-herrero@waikato.ac.nz

TEACHING DATES	LOCATION	ENTRY	APPLICATIONS CLOSE
B Trimester (8 Jul – 3 Nov)	Hamilton campus or Online	You must meet the entry requirements of Unistart. In addition, students need SPNSH231, or equivalent.	28 June 2024

UNDERSTANDING EAST ASIA

INTLC221-24B (HAM) - 15 POINTS

This paper offers a critical examination of historical traditions and contemporary life in East Asia, within a global context. This paper is taught in English and is open to all students, including those who have no prior knowledge of Chinese, Japanese, or Korean.

Contact: Maria Ble-Herrero - maria.ble-herrero@waikato.ac.nz

TEACHING DATES	LOCATION	ENTRY	APPLICATIONS CLOSE
B Trimester (8 Jul – 3 Nov)	Hamilton campus or Online	You must meet the entry requirements of Unistart	28 June 2024

MĀORI AND INDIGENOUS STUDIES

HE HINĀTORE KI TE AO MĀORI: INTRODUCING THE MĀORI WORLD

MĀORI102-24A (HAM) - MĀORI102-24B (HAM) - 15 POINTS

An introduction to the Māori world view, social organisation, cultural concepts, including Maori astronomy, and their relevance in a contemporary society.

Contact: Ivan Kana - ivan.kana@waikato.ac.nz

TEACHING DATES	LOCATION	ENTRY	APPLICATIONS CLOSE
MĀORI102-24A (HAM): A Trimester (26 Feb – 23 Jun)	Hamilton campus or Online	You must meet the entry requirements of Unistart	16 February 2024
MĀORI102-24B (HAM): B Trimester (8 Jul – 3 Nov)	Hamilton campus or Online	You must meet the entry requirements of Unistart	28 June 2024

MUSIC

SECONDARY PERFORMANCE STUDIES 1

MUSIC101-24D (HAM) - 15 POINTS

Students develop musical interpretation and technical skills in their chosen instrument/voice and broaden their repertoire knowledge and performance opportunities at weekly studio classes and Friday performance hour sessions.

Contact: Rachael Griffiths-Hughes - rachael.griffiths-hughes@waikato.ac.nz

TEACHING DATES	LOCATION	ENTRY	APPLICATIONS CLOSE
D Teaching period (26 Feb – 3 Nov)	Hamilton campus or Online	Entry is subject to a successful audition held in the previous year. Contact the Music Programme for details.	16 February 2024

COMPOSITION 1

MUSIC115-24B (HAM) - 15 POINTS

The development of creative musical skills and techniques based on classical and popular idioms; song writing; melody writing; thematic development; harmonic understanding; two-part counterpoint. Computer technology will be used as a composition and publishing tool.

Contact: Michael Williams - michael.williams@waikato.ac.nz

TEACHING DATES	LOCATION	ENTRY	APPLICATIONS CLOSE
B Trimester (8 Jul – 3 Nov)	Hamilton campus or Online	You must meet the entry requirements of Unistart. In addition, students are required to have the ability to read music.	28 June 2024

PACIFIC AND INDIGENOUS STUDIES

INTRODUCTION TO PACIFIC HISTORIES, LANGUAGES & CULTURES

PACIS100-24A (SEC) - 15 POINTS

This paper introduces students to foundational elements of Pacific Studies, including various histories, languages and cultures and their importance to contemporary societies, surveying a number of Pacific Nations.

Contact: Jesi Bennett - jesi.bennett@waikato.ac.nz

TEACHING DATES	LOCATION	ENTRY	APPLICATIONS CLOSE
A Trimester (26 Feb – 23 Jun)	Hamilton campus or Online	You must meet the entry requirements of Unistart	16 February 2024

PHILOSOPHY

INTRODUCTION TO LOGIC

PHILO102-24B (HAM) - 15 POINTS

An introduction to symbolic logic, including formal testing of arguments for validity in propositional logic and predicate logic.

Contact: Joe Ulatowski - joe.ulatowski@waikato.ac.nz

TEACHING DATES	LOCATION	ENTRY	APPLICATIONS CLOSE
B Trimester (8 Jul – 3 Nov)	Hamilton campus or Online	You must meet the entry requirements of Unistart	28 June 2024

THE BIG QUESTIONS: AN INTRODUCTION TO PHILOSOPHY

PHILO150-24B (HAM) - PHILO150-24B TGA) - 15 POINTS

An introduction to philosophy that investigates a range of big questions. The big questions may include: does God exist?, does my morality apply to you?, do we have free will?, what is the meaning of life?, and who am I?

Contact: Dan Weijers - dan.weijers@waikato.ac.nz

TEACHING DATES	LOCATION	ENTRY	APPLICATIONS CLOSE
PHILO150-24B (HAM) - B Trimester (8 Jul – 3 Nov)	Hamilton campus or Online	You must meet the entry requirements of Unistart	28 June 2024
PHILO150-24B (TGA) - B Trimester (8 Jul – 3 Nov)	Tauranga campus or Online	You must meet the entry requirements of Unistart	28 June 2024

SCREEN AND MEDIA STUDIES

UNDERSTANDING VISUAL CULTURE

MEDIA100-24A (HAM) - 15 POINTS

Our lives are dominated by still and moving images and visual technologies. This paper will constitute an important first step in learning to understand how images variously work to convey ideas, their impact and influence on our behaviour, thinking and culture. It draws on a broad theoretical platform from aesthetics, art history, psychology of perception, social semiotics and more to provide skills in analysis, interpretation, and construction.

Contact: Gareth Schott - gareth.schott@waikato.ac.nz

TEACHING DATES	LOCATION	ENTRY	APPLICATIONS CLOSE
A Trimester (26 Feb – 23 Jun)	Hamilton campus or Online	You must meet the entry requirements of Unistart	16 February 2024

SECURITY AND CRIME SCIENCE

INTRODUCTION TO SECURITY AND CRIME SCIENCE

CRSCI101-24A (HAM) - 15 POINTS

This paper is an introduction to topics, approaches and disciplines that help to define Security and Crime Science's approach to reducing and preventing crimes before they happen, thus helping to create safer communities.

Contact: Lisa Tompson - lisa.tompson@waikato.ac.nz

TEACHING DATES	LOCATION	ENTRY	APPLICATIONS CLOSE
A Trimester (26 Feb – 23 Jun)	Hamilton campus or Online	You must meet the entry requirements of Unistart	16 February 2024

SOCIOLOGY

INTRODUCTION TO SOCIOLOGY

SOCIO101-24A (HAM) - SOCIO101-24A (TGA) - 15 POINTS

This paper prepares students for further study in a range of social science subjects. It introduces the main sociological theories, concepts and practices that enable an understanding of contemporary societies.

Contact: Bruce Curtis - bruce.curtis@waikato.ac.nz

TEACHING DATES	LOCATION	ENTRY	APPLICATIONS CLOSE
SOCIO101-24B (HAM) - B Trimester (8 Jul - 3 Nov)	Hamilton campus or Online	You must meet the entry requirements of Unistart	28 June 2024
SOCIO101-24B (TGA) - B Trimester (8 Jul - 3 Nov)	Tauranga campus or Online	You must meet the entry requirements of Unistart	28 June 2024

2024 UNISTART PAPERS TAUGHT ONLINE

Online Unistart papers allow students to experience studying at the University of Waikato without needing to attend on-campus classes.

Moodle is the primary online learning environment at the University of Waikato. On Moodle, students can watch uploaded lectures, interact with their tutors, access paper specific resources and have forum discussions with other students.

If you have any questions about a specific online paper, please get in touch with the listed contact person.

ARTS AND SOCIAL SCIENCES

LANGUAGE IN CONTEXT

ARTSC105-24A (NET) - 15 POINTS

Language in Context is an essential paper for students from a broad range of disciplines where language and communication are a focus. Students are given the tools to examine how human language reflects our histories, our social selves, and our immediate physical contexts. We observe how language is used to reinvent and to reinforce social positioning, to create and to replicate both real and virtual identities. A heightened awareness of the multifunctionality of language, whether spoken, sung, written or texted, enhances our understanding of self and allows us to be more effective communicators.

Contact: Andreaa Calude - andreaa.calude@waikato.ac.nz

TEACHING DATES	ENTRY	APPLICATIONS CLOSE
A Trimester (26 Feb – 23 Jun)	You must meet the entry requirements of Unistart	16 February 2024

CRITICAL SOCIAL SCIENCE RESEARCH: THE CRISIS OF CLIMATE CHANGE

ARTSC106-24B (NET) - 15 POINTS

Human disruption of the climate is perhaps the single most important crisis confronting the planet. This paper is an introduction to critical social science research, organised around the case study of climate change.

Contact: Patrick Barrett - patrick.barrett@waikato.ac.nz

Priya Kurian - priya.kurian@waikato.ac.nz

TEACHING DATES	ENTRY	APPLICATIONS CLOSE
B Trimester (8 Jul – 3 Nov)	You must meet the entry requirements of Unistart	28 June 2024

CLIMATE CHANGE

INTRODUCTION TO CLIMATE CHANGE SCIENCE

CLIMT101-24A (NET) - 15 POINTS

An overview of the scientific basis of climate change with emphasis on understanding climate change mitigation and adaptation.

Contact: Marcus Wilson - marcus.wilson@waikato.ac.nz

TEACHING DATES	ENTRY	APPLICATIONS CLOSE
A Trimester (26 Feb – 23 Jun)	You must meet the entry requirements of Unistart	16 February 2024

INTRODUCTION TO MĀORI, PACIFIC AND INDIGENOUS STUDIES: THE CLIMATE CHANGE CRISIS

CLIMT104-24B (NET) - 15 POINTS

This course examines Māori, Pacific and Indigenous peoples' philosophies and relationships with land, language, culture and resources, with a particular focus on understanding the climate change crisis.

Contact: Sandy Morrison - sandy.morrison@waikato.ac.nz

TEACHING DATES	ENTRY	APPLICATIONS CLOSE
B Trimester (8 Jul – 3 Nov)	You must meet the entry requirements of Unistart	28 June 2024

COMPUTER SCIENCE

INTRODUCTION TO PROGRAMMING

COMPX101-24A (NET) - COMPX101-24B (SEC) - 15 POINTS

This paper introduces computer programming in C# - the exciting challenge of creating software and designing artificial worlds within the computer. It also covers concepts such as the internals of the home computer, the history and future of computers, cyber security, computer gaming, databases, mobile computing and current research and challenges in computer science. No prior programming knowledge is assumed.

Contact: Nilesh Kanji - nilesh.kanji@waikato.ac.nz

TEACHING DATES	ENTRY	APPLICATIONS CLOSE
COMPX101-24A (NET) - A Trimester (26 Feb – 23 Jun)	You must meet the entry requirements of Unistart	16 February 2024
COMPX101-24B (SEC) - B Trimester (8 Jul – 3 Nov)	You must meet the entry requirements of Unistart	28 June 2024

OBJECT-ORIENTED PROGRAMMING

COMPX102-24B (SEC) - 15 POINTS

This paper continues from COMPX101, expanding upon data organisation and algorithms, and introducing code contracts, computer architecture, Boolean algebra, assembly language, program analysis and object-oriented programming.

Contact: Nilesh Kanji - nilesh.kanji@waikato.ac.nz

TEACHING DATES	ENTRY	APPLICATIONS CLOSE
B Trimester (8 Jul – 3 Nov)	You must meet the entry requirements of Unistart. In addition, students are required to meet the following: Achieved an unrestricted pass in COMPX101, OR demonstrate sufficient programming competency and have the support of a teacher at their secondary school. <i>Note: Students will be required to supply a support letter from a teacher listing relevant achievement standards attained.</i>	28 June 2024

DATABASE PRACTICE AND EXPERIENCE

COMPX223-24A (SEC) - 15 POINTS

This paper approaches the subject of databases from a practical perspective - how do I create a database and how do I retrieve/update data. Both aspects are heavily addressed in this paper. Database creation and querying, using SQL, will be introduced in lectures as you will master practical skills associated with a commercial Database product (Microsoft SQL Server). The paper also introduces Microsoft's extension to SQL, Transact-SQL, which provides a user interface to SQL Server. This is to promote both understanding and practice of the different tools used to build, access and maintain a database within a Client/Server database computing environment.

Contact: Nilesh Kanji - nilesh.kanji@waikato.ac.nz

TEACHING DATES	ENTRY	APPLICATIONS CLOSE
A Trimester (26 Feb – 23 Jun)	You must meet the entry requirements of Unistart. In addition, students are required to meet the following: Achieved an unrestricted pass in COMPX101, OR demonstrate sufficient programming competency and have the support of a teacher at their secondary school. <i>Note. Students will be required to supply a support letter from a teacher listing relevant achievement standards attained.</i>	16 February 2024

DATA ANALYTICS

INTRODUCTION TO STATISTICAL METHODS

DATA121-24A (SEC) - 15 POINTS

An introduction to statistical data collection and analysis. Topics include general principles for statistical problem solving; some practical examples of statistical inference; and the study of relationships between variables using regression analysis.

Contact: David Chan - david.chan@waikato.ac.nz

TEACHING DATES	ENTRY	APPLICATIONS CLOSE
A Trimester (26 Feb – 23 Jun)	You must meet the entry requirements of Unistart	16 February 2024

DESIGN

INTRODUCTION TO COMMUNICATION DESIGN PRODUCTION

DSIGN125-24A (SEC) - 15 POINTS

This paper enables students to perform basic computing operations and to operate software packages for the manipulation of visual images and text for use in print and screen-based applications. Students will be introduced to basic computing concepts and provided with software tutorials and related exercises.

Contact: Claire Timpany - claire.timpany@waikato.ac.nz

TEACHING DATES	ENTRY	APPLICATIONS CLOSE
A Trimester (26 Feb – 23 Jun)	You must meet the entry requirements of Unistart	16 February 2024

DIGITAL LEARNING

DEVELOPING DIGITAL FLUENCY

DLRNG100-24A (NET) - 15 POINTS

This paper offers a foundation for students learning to navigate and communicate effectively through digital learning environments. It incorporates purposeful selection of technologies for learning, and digital literacy which includes being able to research, create, evaluate and apply technical skills while doing so.

Contact: Dianne Forbes - dianne.forbes@waikato.ac.nz

TEACHING DATES	ENTRY	APPLICATIONS CLOSE
A Trimester (26 Feb – 23 Jun)	You must meet the entry requirements of Unistart	16 February 2024

ECONOMICS

ECONOMICS FOR BUSINESS AND MANAGEMENT

ECONS101-24A (SEC) - 15 POINTS

This paper offers insights into the behaviour of consumers, firms and the government within the economy, giving students skills in analysing and predicting the actions of individuals and businesses.

Contact: Michael Cameron - michael.cameron@waikato.ac.nz

TEACHING DATES	ENTRY	APPLICATIONS CLOSE
A Trimester (26 Feb – 23 Jun)	You must meet the entry requirements of Unistart	16 February 2024

EDUCATION

THE NEW ZEALAND EDUCATIONAL CONTEXT

EDSOC101-24B (NET) - 15 POINTS

The paper addresses the educational policies, ideas and processes shaping the educational contexts within which New Zealanders learn and teach.

Contact: Pablo Delmonte - pablo.delmonte@waikato.ac.nz

TEACHING DATES	ENTRY	APPLICATIONS CLOSE
B Trimester (8 Jul – 3 Nov)	You must meet the entry requirements of Unistart	28 June 2024

ENGINEERING

ENGINEERING MATHS AND MODELLING 1A

ENGEN101-24A (SEC) - 15 POINTS

A study of the fundamental techniques of algebra and calculus with engineering applications. This is the first of two engineering mathematics papers at first year level.

Contact: Ian Hawthorn - ian.hawthorn@waikato.ac.nz

TEACHING DATES	ENTRY	APPLICATIONS CLOSE
A Trimester (26 Feb – 23 Jun)	You must meet the entry requirements of Unistart. In addition, student must meet the following: 14 credits in NCEA Level 3 Calculus; or equivalent.	16 February 2024

ENGINEERING MATHS AND MODELLING 1B

ENGEN102-24B (SEC) - 15 POINTS

A further study of the fundamental techniques of algebra and calculus with engineering applications. Includes an introduction to relevant statistical methods.

Contact: Ian Hawthorn - ian.hawthorn@waikato.ac.nz

TEACHING DATES	ENTRY	APPLICATIONS CLOSE
B Trimester (8 Jul – 3 Nov)	You must meet the entry requirements of Unistart. In addition, students must meet the following: An unrestricted pass in ENGEN101	28 June 2024

FORENSIC PSYCHOLOGY

INTRODUCTION TO FORENSIC AND CRIMINOLOGICAL PSYCHOLOGY

FPSYC101-24B (NET) - 15 POINTS

This paper focusses on the built and natural environments of New Zealand. What are the big environmental issues? How should our towns and cities grow? Which natural resources require protection and how? Students will be introduced to the theory and practice of planning in order to provide an overview of the nature and purpose of planning.

Contact: Apriel Joliffe Simpson - apriel.joliffesimpson@waikato.ac.nz

TEACHING DATES	ENTRY	APPLICATIONS CLOSE
B Trimester (8 Jul – 3 Nov)	You must meet the entry requirements of Unistart	28 June 2024

GEOGRAPHY

SUSTAINABLE GEOGRAPHIES

GEOGY101-24B (NET) - 15 POINTS

An introduction to the rich field of social and cultural geography with links to the UNDP Sustainable Development Goals. A foundation paper for second year papers on contemporary cultural geographies, health geographies, and Māori geographies.

Contact: Lynda Johnston - lynda.johnston@waikato.ac.nz

TEACHING DATES	ENTRY	APPLICATIONS CLOSE
B Trimester (8 Jul – 3 Nov)	You must meet the entry requirements of Unistart	28 June 2024

A PLANET UNDER PRESSURE

GEOGY102-24A (NET) - 15 POINTS

In recent decades humans have become geological agents, changing physical processes of the earth by such actions as burning fossil fuels, expanding cities, altering diets, and extinguishing species. This paper explores the human motivations and actions that find expression in the natural world. In addition to offering descriptions and explanations of contemporary geographies, students are encouraged to consider solutions to human-induced environmental crises.

Contact: Colin McLeay - colin.mcleay@waikato.ac.nz

TEACHING DATES	ENTRY	APPLICATIONS CLOSE
A Trimester (26 Feb – 23 Jun)	You must meet the entry requirements of Unistart	16 February 2024

HEALTH

UNDERSTANDING HAUORA, HEALTH AND WELLBEING

CMYHE101-24A (NET) - 15 POINTS

This paper examines a social determinants approach to Health. It includes exploration of a range of interactions that influence the health of populations and determinants of health in New Zealand and global contexts.

Contact: Lisette Burrows - lisette.burrows@waikato.ac.nz

TEACHING DATES	ENTRY	APPLICATIONS CLOSE
A Trimester (26 Feb – 23 Jun)	You must meet the entry requirements of Unistart	16 February 2024

HUMAN DEVELOPMENT

LIFESPAN DEVELOPMENT

HMDEV100-24B (NET) - 15 POINTS

This paper focuses on understanding and enhancing human development through an exploration of biological, psychological, social and cultural factors that influence patterns of development and learning over the lifespan.

Contact: Sonja Ellis - sonja.ellis@waikato.ac.nz

TEACHING DATES	ENTRY	APPLICATIONS CLOSE
B Trimester (8 Jul – 3 Nov)	You must meet the entry requirements of Unistart	28 June 2024

INTERNATIONAL LANGUAGES AND CULTURES

FOOD PRACTICES AND CULTURAL JOURNEYS

INTLC222-24A (NET) - 15 POINTS

This paper explores aspects of European and Latin American cultures, history and society. This paper is taught in English and is open to all students, including those who have no prior knowledge of French and Spanish.

Contact: Nathalie Phillippe - nathalie.phillipe@waikato.ac.nz

TEACHING DATES	ENTRY	APPLICATIONS CLOSE
A Trimester (26 Feb – 23 Jun)	You must meet the entry requirements of Unistart	16 February 2024

INTERNATIONAL RELATIONS AND SECURITY STUDIES

INTRODUCTION TO INTERNATIONAL RELATIONS

IRSST103-24B (NET) - 15 POINTS

This paper provides an introduction to the study of international relations in an era of globalisation. It covers the historical background, key concepts and theories, case studies, and contemporary developments in the study of world politics.

Contact: Reuben Steff - reuben.steff@waikato.ac.nz

TEACHING DATES	ENTRY	APPLICATIONS CLOSE
B Trimester (8 Jul – 3 Nov)	You must meet the entry requirements of Unistart	28 June 2024

LAW

INTRODUCTION TO NEW ZEALAND LAW AND SOCIETY

LEGAL105-24A (NET) - 15 POINTS

An introduction for non lawyers to the nature and functions of law and the processes of lawmaking. The relationship between law and society will be illustrated by relevant examples.

Contact: Jennifer Campion - jennifer.campion@waikato.ac.nz

TEACHING DATES	ENTRY	APPLICATIONS CLOSE
A Trimester (26 Feb – 23 Jun)	You must meet the entry requirements of Unistart	16 February 2024

MĀORI EDUCATION

HUARAHI MATAURANGA MĀORI: HISTORICAL AND CONTEMPORARY APPROACHES TO MĀORI EDUCATION

MAOED100-24A (NET) - 15 POINTS

An introduction for non lawyers to the nature and functions of law and the processes of lawmaking. The relationship between law and society will be illustrated by relevant examples.

Contact: Katarina Edmonds - katarina.edmonds@waikato.ac.nz

TEACHING DATES	ENTRY	APPLICATIONS CLOSE
A Trimester (26 Feb – 23 Jun)	You must meet the entry requirements of Unistart	16 February 2024

MATHEMATICS

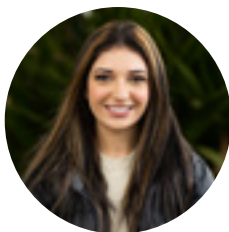
DISCRETE STRUCTURES

MATHS135-24B (SEC) - 15 POINTS

An introduction to a number of the structures of discrete mathematics with wide applicability in areas such as: computer logic, analysis of algorithms, telecommunications, networks and public key cryptography. In addition it introduces a number of fundamental concepts which are useful in Statistics, Computer Science and further studies in Mathematics. Topics covered are sets, binary relations, directed and undirected graphs; propositional and some predicate logic; permutations, combinations, and elementary probability theory; modular arithmetic.

Contact: Ian Hawthorn - ian.hawthorn@waikato.ac.nz

TEACHING DATES	ENTRY	APPLICATIONS CLOSE
B Trimester (8 Jul – 3 Nov)	You must meet the entry requirements of Unistart. In addition, student must meet the following: 14 credits in NCEA Level 3 Mathematics.	28 June 2024



AMREEN VIRK

Rototuna Senior High School

Bachelor of Laws (LLB)

As I finished year 12, I was looking to seek new challenges and opportunities for the year ahead as I was doing a pretty good job with balancing academics and sports. This is when I heard that there were Unistart papers through the University of Waikato, which I could do alongside NCEA level 3. At this point, I didn't know what I wanted to do once I had finished high school. I loved English related subjects, so I took a law paper in the first semester and a writing paper in the second semester. By taking these, I had found that I really enjoyed law and would like to learn more about it, which influenced my decision when applying for a law degree at Waikato - which I am currently enjoying.

By doing Unistart, it gave me a taste of what university style learning feels like and it also gave me a head start for my first year. This was really helpful, as I am now able to do second year law papers and complete my degree a bit earlier.

PHILOSOPHY

CRITICAL THINKING

PHILO103-24A (NET) - 15 POINTS

This paper helps students to engage critically with the sorts of arguments encountered both inside and outside the University.

Contact: Stephanie Gibbons - stephanie.gibbons@waikato.ac.nz

TEACHING DATES	ENTRY	APPLICATIONS CLOSE
A Trimester (26 Feb – 23 Jun)	You must meet the entry requirements of Unistart	16 February 2024

SOCIAL AND MORAL PHILOSOPHY

PHILO106-24A (NET) - 15 POINTS

An investigation of contemporary moral and social issues from a practical ethics perspective. Issues may include abortion, animal welfare, discrimination, euthanasia, freedom of speech, genetic enhancement, privacy, punishment, and your online life.

Contact: Dan Weijers - dan.weijers@waikato.ac.nz

TEACHING DATES	ENTRY	APPLICATIONS CLOSE
A Trimester (26 Feb – 23 Jun)	You must meet the entry requirements of Unistart	16 February 2024

POLITICAL SCIENCE

INTRODUCTION TO POLITICAL PSYCHOLOGY

POLSC103-24A (NET) - 15 POINTS

Politics affects every aspect of our lives. This paper is an introduction to understanding political behaviour, helping you become more critically aware of your own role as a citizen.

Contact: Justin Phillips - justin.phillips@waikato.ac.nz

Olli Hellann - olli.hellann@waikato.ac.nz

TEACHING DATES	ENTRY	APPLICATIONS CLOSE
A Trimester (26 Feb – 23 Jun)	You must meet the entry requirements of Unistart	16 February 2024

SPORT AND HUMAN PERFORMANCE

SPORT, CULTURE AND DEVELOPMENT: TRENDS AND ISSUES

SDCOA101-24B (NET) - 15 POINTS

In this paper students will gain an introduction to sociological understandings of sport and movement cultures. They will develop new ways of critically thinking about the important role sport plays in contemporary society, including the economy, politics, tourism, the media, and our sense of identity, belonging and community. Students will be introduced to a range of sociological concepts - including history, sociology, social psychology, philosophy - from a sport development perspective, and learn how to apply these to local, national and international sporting contexts.

Contact: Mihi Nemani - mihi.nemani@waikato.ac.nz

TEACHING DATES	ENTRY	APPLICATIONS CLOSE
B Trimester (8 Jul – 3 Nov)	You must meet the entry requirements of Unistart	28 June 2024

TEACHING

AN INTRODUCTION TO CHILDREN'S LITERATURE

LLTED101-24A (NET) - 15 POINTS

In this paper we examine children's literature from picturebook to novel; from author to illustrator; from history to modern times. The link between children's literature and education is a thread running through the course. Class members will develop a familiarity with a range of genres and concepts linking children's literature and society.

Contact: Nicola Daly - nicola.daly@waikato.ac.nz

TEACHING DATES	ENTRY	APPLICATIONS CLOSE
A Trimester (26 Feb – 23 Jun)	You must meet the entry requirements of Unistart	16 February 2024

WRITING STUDIES

WRITING FOR ACADEMIC SUCCESS

WRITE100-24A (NET) - WRITE100-24B (NET) - 15 POINTS

The paper gives opportunities for undergraduate students to develop their academic literacy skills. It begins with general academic communication and research skills and then embeds academic literacy practice within disciplines of study.

Contact: Laura Gurney - laura.gurney@waikato.ac.nz

TEACHING DATES	ENTRY	APPLICATIONS CLOSE
WRITE100-24A (NET) A Trimester (26 Feb – 23 Jun)	You must meet the entry requirements of Unistart	16 February 2024
WRITE100-24B (NET) B Trimester (8 Jul – 3 Nov)	You must meet the entry requirements of Unistart	28 June 2024



PAULO BALDO

Cambridge High School

Bachelor of Engineering with Honours, majoring in Mechanical Engineering (BE(Hons))

I first heard about Unistart just before my final year of high school. I was worried that studying a university level paper would interfere with my schoolwork. However, I realised it would provide me with a rare opportunity. One that would allow me to undertake a unique academic challenge, while also giving me a taste of the university experience. I couldn't pass it up.

The paper I chose, Introduction to International Relations, was something I was really interested in. Instead of being an interference as I had initially thought, the paper was a supplement to my regular studies. I was also able to advance my academic skills. Essay writing, academic resource analysis and source referencing are just some of the skills I developed through the programme.

By the time I arrived at the University of Waikato, as a student studying Mechanical Engineering, I was confident in my abilities and felt truly prepared for the next phase of my academic journey. All thanks to my Unistart experience.

2024 UNISTART PAPERS TAUGHT ON CAMPUS

For most of our on-campus papers, Unistart students attend lectures, tutorial, labs or workshops and complete the same assessments as other University of Waikato students enrolled in the paper.

In the case of our on-campus mathematics and science papers, elements may be taught in conjunction with a secondary school where suitable staff and facilities are available. If you have questions about a specific on-campus paper, please get in touch with the listed contact person or our Unistart Programme Coordinator on unistart@waikato.ac.nz

ARTS AND SOCIAL SCIENCES

MUSIC, SOUND AND HUMAN COMMUNICATION

ARTSC112-24B (HAM) - 15 POINTS

Every day we communicate using complex linguistic and musical systems. This paper will explore the role of sound and music in human communication and the cognitive, social, and cultural processes, which underlie such communication. The paper takes a broad, interdisciplinary look at all aspects of sound and musical communication, from the semiotic function of music to its application in a variety of communication contexts.

Contact: Gareth Schott - gareth.schott@waikato.ac.nz

TEACHING DATES	LOCATION	ENTRY	APPLICATIONS CLOSE
B Trimester (8 Jul – 3 Nov)	Hamilton campus	You must meet the entry requirements of Unistart	28 June 2024

BIOLOGY

CONCEPTS OF BIOLOGY - NGĀ HUATAU O TE KOIORA

BIOEB101-24A (HAM) - 15 POINTS

An introduction to the foundations of biology, including the structure and functioning of cells, evolution, the origins and diversity of life, and a tour of the major forms of life and their defining characteristics.

Contact: Brydget Tulloch - brydget.tulloch@waikato.ac.nz

TEACHING DATES	LOCATION	ENTRY	APPLICATIONS CLOSE
A Trimester (26 Feb – 23 Jun)	Hamilton campus	You must meet the entry requirements of Unistart	16 February 2024

INTRODUCTION TO ECOLOGY AND BIODIVERSITY - MĀTAI HAUROPI A KANORAU KOIORA

BIOEB102-24B (HAM) - BIOEB102-24B (TGA) - 15 POINTS

An introduction to the principles of ecology and biodiversity. Topics include population, community and ecosystem ecology, conservation biology, and the structure, functioning and environmental responses of animals and plants. Examples will include New Zealand ecosystems and biota.

Contact: Mike Clearwater (Hamilton) - mike.clearwater@waikato.ac.nz

Joanne Ellis (Tauranga) - joanne.ellis@waikato.ac.nz

TEACHING DATES	LOCATION	ENTRY	APPLICATIONS CLOSE
BIOEB102-24B (HAM) - B Trimester (8 Jul – 3 Nov)	Hamilton campus	You must meet the entry requirements of Unistart	16 February 2024
BIOEB102-24B (TGA) - B Trimester (8 Jul – 3 Nov)	Tauranga campus	You must meet the entry requirements of Unistart	28 June 2024

INTRODUCTION TO CELLULAR AND MOLECULAR BIOLOGY - MĀTAI PŪTAU A MĀTAI RĀPOI NGOTA KOIORA

BIOMO101-24B (HAM) - 15 POINTS

An introduction to the central concepts of Molecular and Cellular Biology, including the ultrastructure and function of cells, the biochemical processes involved, and the role of DNA in cellular function, inheritance and evolution.

Contact: Brydget Tulloch - brydget.tulloch@waikato.ac.nz

TEACHING DATES	LOCATION	ENTRY	APPLICATIONS CLOSE
B Trimester (8 Jul – 3 Nov)	Hamilton campus	You must meet the entry requirements of Unistart	28 June 2024

CHEMISTRY

STRUCTURE AND SPECTROSCOPY - TŪRAMARAMATIA I NGĀ HANGANGA

CHEMY101-24A (HAM) - 15 POINTS

A theoretical and practical course covering aspects of analytical and inorganic chemistry. This course is required for the chemistry major.

Contact: Megan Grainger - megan.grainger@waikato.ac.nz

TEACHING DATES	LOCATION	ENTRY	APPLICATIONS CLOSE
A Trimester (26 Feb – 23 Jun)	Hamilton campus	You must meet the entry requirements of Unistart. While there are no formal entry requirements for CHEMY101, it is strongly recommended that you have 14 credits in NCEA Level 3 Chemistry.	16 February 2024

CHEMICAL REACTIVITY - TAUHOHEHOHE MATŪ

CHEMY102-24B (HAM) - 15 POINTS

A theoretical and practical course covering aspects of physical and organic chemistry. This course is required for the chemistry major.

Contact: Martina Pietsch Brown - martina.pietschbrown@waikato.ac.nz

TEACHING DATES	LOCATION	ENTRY	APPLICATIONS CLOSE
B Trimester (8 Jul – 3 Nov)	Hamilton campus	You must meet the entry requirements of Unistart. There are no formal requirements for CHEMY102 but we strongly recommend a minimum of 14 credits at NCEA Level 3 Chemistry	28 June 2024

EARTH SCIENCE

INTRODUCTION TO EARTH SYSTEM SCIENCES - PŪTAIAO PŪNAHA WHENUA

EARTH101-24A (HAM) - EARTH101-24A (TGA) - 15 POINTS

A lecture and laboratory paper that explores the interacting processes that affect the surface of the Earth, producing landforms and resources, with a focus on physical processes. Topics covered include coastal processes and hazards; climate change; weathering; erosion and mass movement; soil formation; the hydrological cycle; rivers and groundwater; and glaciers. This paper includes a weekend field trip.

Contact: Hazel Needham - hazel.needham@waikato.ac.nz

TEACHING DATES	LOCATION	ENTRY	APPLICATIONS CLOSE
EARTH101-24A (HAM) - A Trimester (26 Feb – 23 Jun)	Hamilton campus	You must meet the entry requirements of Unistart	16 February 2024
EARTH101-24A (TGA) - A Trimester (26 Feb – 23 Jun)	Tauranga campus	You must meet the entry requirements of Unistart	28 June 2024

DISCOVERING PLANET EARTH - TŪHURATIA PAPATŪĀNUKU

EARTH102-24B (HAM) - 15 POINTS

This paper explores the Earth's interior and its dynamic interaction with the crust, including: the major rocks and minerals; interpreting the rock record and geologic maps; the geological time scale and fossils; plate tectonics; volcanism; earthquakes.

Contact: Adrian Pittari - adrian.pittari@waikato.ac.nz

TEACHING DATES	LOCATION	ENTRY	APPLICATIONS CLOSE
B Trimester (8 Jul – 3 Nov)	Hamilton campus	You must meet the entry requirements of Unistart	28 June 2024

ENVIRONMENTAL SCIENCES

ENVIRONMENTAL SCIENCE - PŪTAIAO TAIAO

ENVSC101-24B (HAM) - ENVSC101-24B (TGA) - 15 POINTS

A scientific study of the interaction between humans and the environment including climate change, utilisation and exploitation of natural resources and the effects of human activities on biological, chemical and physical processes that form resources and control ecosystems.

Contact: Hazel Needham - hazel.needham@waikato.ac.nz

TEACHING DATES	LOCATION	ENTRY	APPLICATIONS CLOSE
ENVSC101-24B (HAM) - B Trimester (8 Jul – 3 Nov)	Hamilton campus	You must meet the entry requirements of Unistart	28 June 2024
EARTH101-24A (TGA) - A Trimester (26 Feb – 23 Jun)	Tauranga campus	You must meet the entry requirements of Unistart	28 June 2024

MUSIC

CHAMBER MUSIC 1

MUSIC121-24D (HAM) - 15 POINTS

This paper provides practical experience and development in a variety of chamber music formations, sonata duo, piano duet, piano trio, string quartet, vocal ensemble, as well as orchestral and choral practice, and, for keyboard players, continuo and accompanying skills.

Contact: Luca Manghi - luca.manghi@waikato.ac.nz

TEACHING DATES	LOCATION	ENTRY	APPLICATIONS CLOSE
D Teaching period (26 Feb – 3 Nov)	Hamilton campus	You must meet the entry requirements of Unistart. In addition, students need to meet the following: Entry is subject to a successful audition and is at the discretion of the Chamber Music Coordinator.	16 February 2024

SECONDARY PERFORMANCE STUDIES 1

MUSIC121-24B (HAM) - 15 POINTS

Students develop musical interpretation and technical skills in their chosen instrument/voice and broaden their repertoire knowledge and performance opportunities at weekly studio classes and Friday performance hour sessions.

Contact: Rachael Griffiths-Hughes - rachael.griffiths-hughes@waikato.ac.nz

TEACHING DATES	LOCATION	ENTRY	APPLICATIONS CLOSE
B Trimester (8 Jul – 3 Nov)	Hamilton campus	Entry is subject to a successful audition. Students should contact the Music Programme for details.	28 June 2024



DANA GREAVES

Cambridge High School

Bachelor of Computer Science (BCompSc)

The Unistart programme as a whole was a great experience. It helped me prepare for University and post high school life in so many ways.

After going through secondary school taking a range of subjects from different faculties, it was such a daunting idea that I would have to choose just one or two to focus on and make a career. So when I was approached about taking papers early to experience what it would be like to study at university, I was immediately curious. I took two computer science papers in 2021, which were a completely different experience to any of the high school classes I was taking. The amount of enthusiasm and support I got from tutors and lecturers was amazing, especially after they found out I was a high school student and said that they would love to see me back next year. That finalised my decision to go to university.

Getting to know the people, the platforms and expectations of University early really helped make the adjustment to uni life so much easier.

PAPER SUMMARY

FLEXI

SUBJECT	PAPER TITLE
Agribusiness	AGBUS101-24A (HAM) Agri-Food Business
Arts and Social Science	ARTSC103-24A (HAM) Rights and Reason
	ARTSC103-24A (TGA) Rights and Reason
	ARTSC103-24B (HAM) Rights and Reason
Communication	COMMS101-24A (TGA) Communication Competencies
English	ENGL100-24A (HAM) Telling the Story
	ENGL101-24B (HAM) Adapting Stories
Environmental Planning	ENVPL100-24A (HAM) Introduction to Environmental Planning
	ENVPL101-24B (HAM) Future Cities
Gender and Sexuality Studies	GNSEX101-24B (HAM) Gender and Sexuality: Representations and Realities
	GNSEX101-24B (TGA) Gender and Sexuality: Representations and Realities
International Languages and Cultures	INTLC101-24B (HAM) International Languages and Cultures
	INTLC221-24B (HAM) Understanding East Asia
	SPNSH231-24A (HAM) Intermediate Spanish 1
	SPNSH232-24B (HAM) Intermediate Spanish 2
Māori	MAORI102-24A (HAM) He Hinātore kit e Ao Māori: Introducing the Māori World
	MAORI102-24A (HAM) He Hinātore kit e Ao Māori: Introducing the Māori World
Music	MUSIC101-24D (HAM) Secondary Performance Studies 1
	MUSIC115-24B (HAM) Composition 1
Pacific and Indigenous Studies	PACIS100-24A (HAM) Introduction to Pacific Histories, Languages and Cultures
Philosophy	PHILO102-24B (HAM) Introduction to Logic
	PHILO150-24B (HAM) The Big Questions: An Introduction to Philosophy
	PHILO150-24B (TGA) The Big Questions: An Introduction to Philosophy
Screen and Media Studies	MEDIA100-24A (HAM) Understanding Visual Culture
Security and Crime Science	CRSC101-24A (HAM) Introduction to Security and Crime Science
Sociology	SOCIO101-24B (HAM) Introduction to Sociology
	SOCIO101-24B (TGA) Introduction to Sociology

ONLINE

SUBJECT	PAPER TITLE
Arts and Social Sciences	ARTSC105-24A (NET) Language in Context
	ARTSC106-24B (NET) Critical Social Science Research: The Crisis of Climate Change
Climate Change	CLIMT101-24A (NET) Introduction to Climate Change Science
	CLIMT104-24B (NET) Introduction to Māori, Pacific and Indigenous Studies: The Climate Change Crisis
Computer Science	COMPX101-24A (NET) Introduction to Programming
	COMPX101-24B (SEC) Introduction to Programming
	COMPX102-24B (SEC) Object-Oriented Programming
	COMPX223-24A (SEC) Database Practice and Experience
Data Analytics	DATA121-24A (SEC) Introduction to Statistical Methods
Design	DSIGN125-24A (SEC) Introduction to Communication Design Production
Digital Learning	DLRNG100-24A (NET) Developing Digital Fluency
Economics	ECONS101-24A (SEC) Economics for Business and Management
Education	EDSOC101-24B (NET) The New Zealand Educational Context
Engineering	ENGEN101-24A (SEC) Engineering Maths and Modelling 1A
	ENGEN102-24B (SEC) Engineering Maths and Modelling 1B
Forensic Psychology	FPSYC101-24B (HAM) Introduction to Forensic and Criminological Psychology
Geography	GEOGY101-24B (NET) Sustainable Geographies
	GEOGY102-24A (NET) A Planet Under Pressure
Health	HELTH110-24A (NET) Understanding Hauora, Health and Wellbeing
Health, Sport and Human Performance	SDCOA101-24B (NET) Sport, Culture and Development: Trends and Issues
Human Development	HMDEV100-24B (NET) Lifespan Development
International Languages and Cultures	INTLC222-24A (NET) Food Practices and Cultural Journeys
International Relations and Security Studies	IRSST103-24B (NET) Introduction to International Relations
Law	LEGAL105-24A (NET) Introduction to New Zealand Law and Society
Māori Education	MAOED100-24A (NET) Huarahi Matauranga Māori: Historical and Contemporary Approaches to Māori Education
Mathematics	MATHS135-24B (SEC) Discrete Structures

SUBJECT	PAPER TITLE
Philosophy	PHILO103-24A (NET) Critical Thinking
	PHILO106-24A (NET) Social and Moral Philosophy
Political Science	POLSC103-24A (NET) Introduction to Political Psychology
Teaching	LLTED101-24A (NET) An Introduction to Children's Literature
Writing Studies	WRITE100-24A(NET) Writing for Academic Success
	WRITE100-24B (NET) Writing for Academic Success

HAMILTON CAMPUS

SUBJECT	PAPER TITLE
Arts and Social Sciences	ARTSC112-24B (HAM) Music, Sound and Human Communication
Biology	BIOEB101-24A (HAM) Concepts of Biology - Ngā Huatau o te Koiora
	BIOEB102-24B (HAM) Introduction to Ecology and Biodiversity - Mātai Hauropi a Kanorau Koiora
	BIOMO101-24B (HAM) Introduction to Molecular and Cellular Biology - Mātai Pūtau a Mātai Rāpoi Ngota Koiora
Chemistry	CHEMY101-24A (HAM) Structure and Spectroscopy - Tūramaramatia i ngā Hanganga
	CHEMY102-24B (HAM) Chemical Reactivity - Tauhohehohe Matū
Earth Sciences	EARTH101-24A (HAM) Introduction to Earth System Sciences - Pūtaiao Pūnaha Whenua
	EARTH102-24B (HAM) Discovering Planet Earth - Tūhuratia Papatūānuku
Environmental Sciences	ENVSC101-24B (HAM) Environmental Science - Pūtaiao Taiao
Music	MUSIC101-24B (HAM) Secondary Performance Studies 1
	MUSIC121-24D (HAM) Chamber Music 1

TAURANGA CAMPUS

SUBJECT	PAPER TITLE
Biology	BIOEB102-24B (TGA) Introduction to Ecology and Biodiversity - Mātai Hauropi a Kanorau Koiora
Earth Sciences	EARTH101-24A (TGA) Introduction to Earth System Sciences - Pūtaiao Pūnaha Whenua
Environmental Sciences	ENVSC101-24B (TGA) Environmental Science - Pūtaiao Taiao

ENROLMENT AND STUDY INFORMATION

PAPER COSTS

To find out what each Unistart paper costs, click on the individual paper codes online at waikato.ac.nz/study/unistart. Remember if you receive the Unistart Scholarship, these costs will be fully covered. For information on how to pay, visit waikato.ac.nz/go/pay

PAPER DELIVERY

Unistart papers are taught through FLEXI, online or on-campus. Before you apply for an on-campus paper, make sure you can attend classes in person at the scheduled times.

ACCESS TO RESOURCES AND STUDENT ID CARDS

Once your enrolment is complete, you'll get an email with your student login details and instructions to access our online learning resources.

To get your student ID card, you will need to send a passport-sized colour photo to idcards@waikato.ac.nz (include your student ID number in the email). Your ID card gives you access to campus printers and computer labs and you also need it to collect assignments and sit exams. If you do not live near our Hamilton or Tauranga campus, you can request to have your ID posted.

GET IN TOUCH

If you have any questions about Unistart or need a helping hand with the process, we're happy to help. Visit waikato.ac.nz/study/unistart

Unistart Programme Coordinator
unistart@waikato.ac.nz

If you would like to speak to someone about how Unistart can help with your future tertiary study, please book an appointment with one of our Future Student Advisors by visiting waikato.ac.nz/study/student-advisors





ASSESSMENTS

Unistart papers often combine internal and external assessments. Check the assessment details in the paper outline.

Final exams are held at the University of Waikato Hamilton and Tauranga campuses. If you don't live near either of these locations, you can arrange to sit your exam at your school or at a local tertiary education provider. Contact the Unistart Coordinator at unistart@waikato.ac.nz to make alternative exam arrangements. You will not be required to come onto campus to complete an exam if you are taking an Online (NET) paper.

STUDENT SERVICES

We're here to help you get the advice and support you need to make sure your Unistart experience is successful. Our student services include tutoring, mentoring, IT support and health services. For a full rundown of what we offer, visit waikato.ac.nz/go/student-services

LIBRARY

Get your studies off to a great start. Learn how to find quality academic material for your assignments, reference correctly, navigate your library account and more, visit waikato.ac.nz/library

WITHDRAWING FROM PAPERS

If you need to withdraw from a Unistart paper, the best time to do this is in the first two weeks of trimester. During this time, you'll get a refund of fees (if you didn't receive the Unistart scholarship) and nothing will appear on your academic transcript. After two weeks, you won't receive a full refund and you'll get a 'withdrawn' (WD) or 'incomplete' (IC) notice on your academic transcript. To withdraw, please submit a request to the Unistart Coordinator at unistart@waikato.ac.nz explaining why you wish to do so.

GRADES AND TRANSCRIPT

You can access your final grades and request an academic transcript at my.waikato.ac.nz four weeks after the end of trimester. Simply click onto the 'Exams and ' tab to choose between viewing your grades and requesting your academic record.

Visit waikato.ac.nz/go/grades to see our grading scale. For other grading rules and regulations visit calendar.waikato.ac.nz.

IMPORTANT DATES

EVENT	DATE
Final deadline for schools to return signed Unistart Agreement to University	29 January 2024
Last date for enrolment applications for A Trimester	16 February 2024
A and D Trimesters start	26 February 2024
Last date for fee-paying students to withdraw from A Trimester papers and get a full refund of fees	10 March 2024
Last date for fee-paying students to withdraw from D Trimester papers and get a full refund of fees	17 March 2024
Last date to withdraw from A and D Trimester papers (no refund for fee-paying students)	7 April 2024
A Trimester ends	23 June 2024
Last date for enrolment applications for B Trimester	28 June 2024
B Trimester starts	8 July 2024
Last date for fee-paying students to withdraw from B Trimester papers and get a full refund of fees	21 July 2024
Last date to withdraw from B Trimester papers (no refund for fee-paying students)	31 July 2024
B and D Trimesters end	3 November 2024





THE UNIVERSITY OF
WAIKATO
Te Whare Wānanga o Waikato

FOR THE PEOPLE
KO TE TANGATA

The University of Waikato
Private Bag 3105
Hamilton 3240
New Zealand

0800 WAIKATO 
0800 924 528
info@waikato.ac.nz 
waikato.ac.nz 